



Product Overview

SAFETY AND MONITORING DEVICES
FOR CONVEYOR SYSTEMS



About Us

Kiepe Electric GmbH is well-known as manufacturer for premium-quality products "Made in Germany" with location of development and production in Duesseldorf at the Rhine. Our INDUSTRY program includes safety-relevant emergency stop devices, position switches and speed monitor devices, designed for the harsh environment of the bulk material industry. Since the late 1960s, more than 49,600miles (80,000km) of conveyor systems have been equipped with KIEPE™ products all over the world .

Our Brands KIEPE ELEKTRIK™ and KIEPE™ have a good reputation on the market and stand for robustness, reliability and fair services. A worldwide distribution network creates the confidence of always having a contact person nearby. Our sufficient customers know, that this means less downtime and focus on their main job to keep their good things moving.

KIEPE Certificates

ISO 9001
ISO 14001
ISO 45001



Current Product Certificates



Keep Good Things Moving.

QUALITY

MADE IN GERMANY

EXPERIENCE

Your Industry. Our References!



BULK MATERIAL PRODUCTION



BULK MATERIAL PROCESSING



BULK MATERIAL HANDLING

Extract of Our References:

Cement Plant in Vietnam, Malaysia, Bucharest (RO), Manila (PH) • Coal Stock in Malaysia • Producer for Bulk Handling Equipment and Open Pit Mining Equipment in Czech Republic • Railway and Tunnel Company in Beijing (CN) • Steel Company in Beijing (CN) • Tunnelling Equipment Company in Guangzhou (CN) • Machinery Companies in China • Conveyor System Construction Firm in Norway, Kalakhang Maynila (PH) • Tunnel Company in Norway • Minerals Industry in Norway • Conveyor Technology and Logistics Company for Bulk Material in Norway, Denmark • Producer of Off-Shore Conveyor Systems in Norway • Fertilizer Production in Russia • Iron Ore Mining and Processing in Russia • Building Material Manufacturer in Taguig City (PH), Mandaluyong City (PH), San Pedro Garza Garcia (MX), Casablanca (MA) • Gold Processing and Refining in the Philippines • Cement Production Apaxco de Ocampo (MX), Mexiko Stadt (MX), Bangkok (TH), Casablanca (MA) • Copper Mine Operator in Mexico • Electricity Generating Company Nonthaburi (TH) • Phosphate Industry Casablanca (MA) • Electrical Industry Marocco • Bulk and Transshipment Companies in Rotterdam (NL) • Steel Production Company in Ijmuiden (NL) • Handling Company for Ore and Steel in Rotterdam (NL) • Power Plants in Maasvlakte (NL) • And Much More

Emergency Stop Switches

Pull Rope Emergency Stop Switches

to stop conveyors at any location in emergencies in accordance to EN 620

- enclosures in aluminium, plastic or cast iron
- uni- and bidirectional installation of pull rope
- up to 2 x 125 m
- ATEX Ex II 2D – II 3 D
- enhanced temperature range to $-40\text{ }^{\circ}\text{C}$ ($-40\text{ }^{\circ}\text{F}$)
- two-wire-fieldbus connection



Components for Pull Rope Installation

required for assembling a pull rope system for Emergency Stop Switches

- pull rope of 5 mm diameter with red plastic coating
- tension springs, turnbuckles and rope clamps
- rope support eyebolts and accessories
- corrosion-resistant materials available



Speed Monitor Devices

Speed and Standstill Monitors and Robust Transducers

for monitoring the speed and rotation of conveyors

- sensors
- low-speed-detection, direction of rotation
- belt driven speed monitors



Position Switches

Belt Misalignment Switches

protect equipment by shutting down the conveyor when the belt mistracks

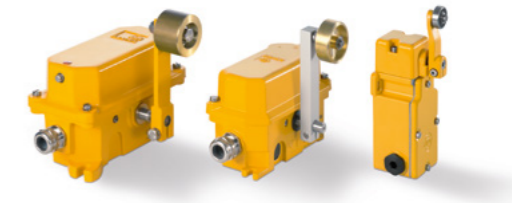
- enclosures in aluminium, plastic or cast iron
- pre-warning; switch off; latching / catch mechanism
- adjustable switching cams
- ball bearing roller levers
- ATEX Ex II 2D – II 3 D
- enhanced temperature range to $-40\text{ }^{\circ}\text{C}$ ($-40\text{ }^{\circ}\text{F}$)
- two-wire-fieldbus connection



Robust Limit Switches

for position monitoring

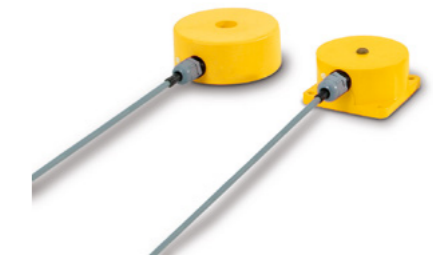
- enclosures in aluminium, plastic or cast iron
- various actuating levers, rods, trollers
- ATEX Ex II 2D – II 3 D



Misalignment Switches for Bucket Elevators

for contact free monitoring of bucket travel

- for aluminium, mild steel and stainless steel
- switching distance up to 70 mm



Belt Monitoring

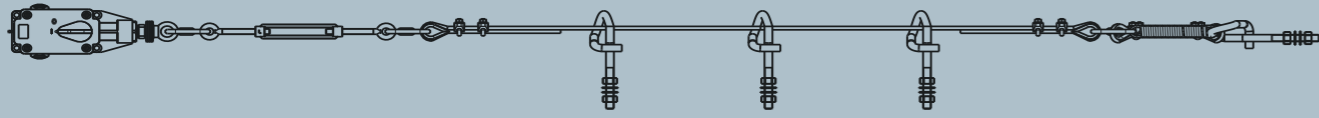
for detection of belt breakage

- separable switches
- installation material



Mounting Kit Recommendation

Mounting Kits for Single-Side Pull Rope Installation



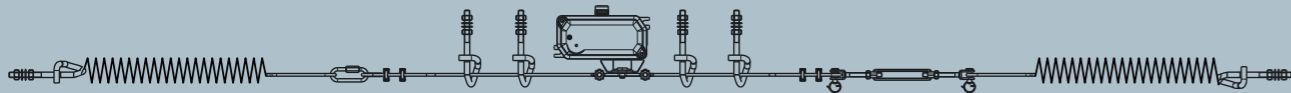
One Package - One Code!

Save time and money on your order.

- one ordering code for all components incl. pull rope
- up to 20 percent cost savings compared to single part orders
- packed for easy installation

Quick Clamp System - Mounting Kits

Quick Clamp System
Fast installation!



Mount - Clamp - Go!

Save time and money at the mounting of your double-side pull rope installation

- 50 percent time and material savings compared to conventional installation
- Simplification of the assembly processes
- Safe adjustment of the correct spring preload with just one person
- High quality components for a long life

Fields of Application Recommendation



Corrosive

Seaport and transshipment point, fertilizer production, bio recycling, salt extraction



Non-Corrosive

All environmental conditions without corrosive impact



Rock, Boulder:

Sugar beet, tree trunks, iron ore, scrap, coal, minerals, debris



Sand, Gravel:

Sugar, grain, pellets, briquette, iron ore pellets, recycling material, coke, gravel, sand, cement



Powder, Flour:

Icing sugar, flour, sawdust, fertilizer, ferric oxide, ash, mineral powder, gypsum

Environmental Conditions without external protection

Bulk Material

		Corrosive			Non-Corrosive			
		Powder	Sand	Rock	Powder	Sand	Rock	
Emergency Stop Switches	Pull Rope Switches One-Sided	PAS	✓		✓			
		LRS	○	○	✓	✓		
	Pull Rope Switches Two-Sided	PRS	✓	✓		✓	✓	
		HEN	○	✓	○	✓	✓	○
		NTS	✓	✓	○	✓	✓	○
SEG	○	✓	✓	✓	✓	✓		
Position Switches	Belt Misalignment Switches	MAS	✓		✓			
		VG	○	○		✓	✓	
		MRS	✓	✓		✓	✓	
		HES	○	✓	○	✓	✓	○
	SLS	✓	✓	○	✓	✓	○	
	SEL	○	✓	✓	✓	✓	✓	
	Limit Switches	VG	○	○		✓	✓	
HER		○	✓	○	✓	✓	○	
SLR		✓	✓	○	✓	✓	○	
REL	○	✓	✓	✓	✓	✓		
Bucket Elevator Switch	SBW	✓	✓		✓	✓		
Belt Monitoring	BLS	○	○	○	✓	✓	✓	
Speed Monitoring	Pulse Transducers	DG	(Installation in protected areas)					
		EOG	○	○		✓	✓	
		DK	○	○		✓	✓	
	Speed Monitors	EDW	(Installation in the control cabinet)					
		EDO	(Installation in the control cabinet)					
	Pulse Transducers incl. Speed Monitor	SWE	○	○		✓	✓	
		SWEB	○	○		✓	✓	
Standstill Monitors	SW	○	○		✓	✓		
	SWB	○	○		✓	✓		

This table is a recommendation and may differ for different applications

✓ Suitable
○ Conditionally Suitable

World Wide Partners

Australia

Resource Industry Solutions RIS
AU - 6168 East Rockingham
☎ +61 89529 1100
✉ enquiries@solutions-ex.com.au
🌐 www.solutions-ex.com.au

Austria

Kiepe Electric GmbH
DE - 40599 Düsseldorf
☎ +49 211 74 97 -0
✉ contact@kiepe-industry.com
🌐 www.kiepe-industry.com

Argentina

Warbel
AR - 3500 Resistencia / Chaco
☎ +54 341 438 9600
✉ info@warbel.com.ar
🌐 www.warbel.com.ar

Belgium

VIALEC bv / srl
BE - 9470 Denderleeuw
☎ +32 53 68 41 63
✉ info@vialec.be
🌐 www.vialec.be

Brasil

Blinx Informacao E Tecnologia
BR - 22610-300 Rio de Janeiro
☎ +55 21 2422-8191
☎ +55 21 98892-8191
✉ blinx@blinx.com.br
🌐 www.blinx.com.br

Bulgaria

Mining Ltd.
BG - 1113 Sofia
☎ +359 2 8 722 486
☎ +359 887 646 676
✉ managers@miningbg.com
🌐 www.miningbg.com

Canada

Aroltec Corp.
CA - L3T 2C6 Thornhill, ON
☎ +1 437 886 5202
☎ +1 437 350 5252
✉ info@aroltec.ca
🌐 www.aroltec.ca

Chile

SCEM LTDA.
CL - Maipu Santiago
☎ +56 -2 2369 1800
✉ ventas@scem-chile.cl
🌐 www.scem-chile.cl

China

Shenzhen Eurmin Tech Co Ltd
CN - 518028 Shenzhen
☎ +86 755 83015920
✉ eurmin@china.com

Czech Republic, Slovakia

Kiepe Electric GmbH
DE - 40599 Düsseldorf
☎ +49 211 74 97 -0
✉ contact@kiepe-industry.com
🌐 www.kiepe-industry.com

Denmark

Industrikomponenter A/S
DK - 2750 Ballerup
☎ +45 56 72 00 00
✉ info@industrikomponenter.dk
🌐 www.industrikomponenter.dk

Egypt

TMA for Industrial Supplies
EG - 11835 Cairo
☎ +2 010 22562251
☎ +2 010 1133 5153
✉ support@tma-eg.com
🌐 www.tma-eg.com

Finland

Pronomic Oy
FI - 00680 Helsinki
☎ +358 (0) 207 341 680
✉ myynti@pronomic.com
🌐 www.pronomic.com/fi

France

Telemetrix SAS
FR - 78640 Saint-Germain-de-la-Grange
☎ +33 972 11 00 03
✉ contact@telemetrix.fr
🌐 www.telemetrix.fr

Ghana

Zafco International Inc.
(Representation by:
Mintech Resources Ltd.)
GH - Tarkwa
☎ + 233 (0) 246720718
☎ + 233 (0) 203252246
✉ info@mintechresources.net
🌐 www.zafco.ca

Great Britain

Sentry Technology
GB - BL7 8AY Belmont, Bolton
☎ +44 1204 81 11 11
✉ sales@sentrytechnology.co.uk

Greece

IMM Supplies
Georgios Nik. Michos
GR - 11141 Athens
☎ +30 210 2234292
✉ mail@immsupplies.com

Hungary

ESFIT GmbH
DE - 40231 Düsseldorf
☎ +49 211 88 92 9700
✉ info@esfit.de
🌐 www.esfit.de

India, Bangladesh, Sri Lanka

Seva Switchgear Pvt. Ltd.
IN - 560023 Bangalore
☎ +91 080 2338 3047 / 2338 0233
✉ info@sevaspl.com
🌐 www.sevaspl.com

Indonesia

PT. CADZO EWIGO
ID - 15117 Tangerang
☎ +62 21 55 29 310
✉ cadzoewigo@outlook.com

Ireland

Reg Farrell Engineering Ltd.
IE - D12 XW50 Dublin 12
☎ +353 1 465 90 10
✉ info@rfe.ie
🌐 www.rfe.ie

Italy

Kiepe Electric SpA
IT - 20867 Caponago (MB)
☎ +39 02 92 72 81
✉ customerservice@kiepeelectric.com
🌐 www.kiepe-electric.com

Mexico

Telux S.A.
MX - CDMX-México. C.P. 03910
☎ +52 55 56110110
✉ ventas@telux.com.mx
🌐 www.telux.com.mx

Morocco

KABYSEN MAROC
MA - 20190 Casablanca, Lissasfa
☎ +212 522 65 19 16
✉ r.kassimi@kabysen.ma
🌐 www.kabysen.ma

Netherlands

Kiepe Electric GmbH
Sales Representative NL
NL - 4904 Oosterhout
☎ +31 162 46 96 20
✉ kiepe-elektrik@tecsa.nl
🌐 www.kiepe-elektrik.com

Nigeria, Sub-Saharan

MCS NIGERIA
NG - 100212 Ikeja, Lagos
☎ +234 806 77 11 489
✉ nigeria@mcs-spares.com
🌐 www.mcs-spares.com

North Macedonia

Siskon
MK - 1000 Skopje
☎ +389 2 3062 423
✉ siskon@siskon.com.mk
🌐 www.siskon.com.mk

Norway + Iceland

ASI Automatikk AS
NO - 3414 Lierstranda
☎ +47 9006 1100
✉ info@asiflex.no
🌐 www.asiflex.no

Pakistan

MATCO Pvt. Ltd.
PK - 44000 Islamabad
☎ +92 (051) 2874941 ~3
✉ sales@matcopk.com
🌐 www.matcopk.com

Peru

HAZVE SAC
PE - Lima
☎ +51 965 401 349
✉ viviane.sarmiento@hazve.pe
🌐 www.hazve.pe

Philippines

MDSystems Inc.
PH - 1700 Parañaque City
☎ +63 917 524 812 3
✉ imquinio@yahoo.com.ph

Poland

Newtech Engineering Sp. z o.o.
PL - 44-100 Gliwice
☎ +48 32 237 6198
✉ newtech@newtech.com.pl
🌐 www.newtech.com.pl

Portugal

Ozec Equipamentos Industriais Lda
PT - 2950-554 Palmela
☎ +351 212 139 390/1
✉ geral@ozec.pt
🌐 www.ozec.com.pt

Qatar

Advanced Fluid Power
QA - Doha
☎ +974 40 16 42 73
✉ sales@afp-qatar.com
🌐 www.afp-qatar.com

Romania

MARSAT S.A.
RO - 210233 Târgu Jiu, Gorj
☎ +40 253 210 047 / 054
✉ office@marsat.com.ro
🌐 www.marsat.com.ro

Singapore, Malaysia, Vietnam

Jinsari Pte Ltd
SG - 323104 Singapore
☎ +65 9856 8918
✉ linda@jinsari.com
🌐 www.jinsari.com

Slovenia, Croatia, Bosnia-Herzegovina, Serbia

Marchiol.d.o.o. PE Ljubljana
SI - 1000 Ljubljana
☎ +386 1 52 06 555
✉ bozo.potocnik@marchiol.com
🌐 www.marchiol.si

South Africa, Botswana, Zwasiland

Woodrow Engineering Sales C.C.
ZA - 8301 Kimberley
☎ +27 53 8611 596
✉ jazz@woodrow.co.za
🌐 www.woodrow.co.za

Spain

KINEXTEC IBERICA SL
ES - 28923 Madrid
☎ +34 912 625 978
✉ info@kinextec.es
🌐 www.kinextec.es

Sweden

Kiepe Elektriska AB
SE - 21124 Malmö
☎ +46 40 29 1555
✉ info@kiepe.se
🌐 www.kiepe.se

Switzerland

APS systems AG
CH - 4626 Niederbuchsiten
☎ +41 (0)62 517 88 33
✉ info@kiepe-elektrik.ch
🌐 www.kiepe-elektrik.ch

Taiwan

Topking Enterprises Co. Ltd.
TW - 106 Taipei City
☎ +886 2366-0436
✉ tony@topking-enterprises.com
🌐 www.topking.com.tw

Thailand, Laos, Cambodia, Myanmar

R.J.C Associates Co., Ltd.
TH - 10200 Bangkok
☎ +66 2 281 55 40
✉ rjco@rjc.co.th
🌐 www.rjc.co.th

Turkey

CEFIP-Makina & Endüstriyel
TR- 34384 Sisli / Istanbul
☎ +90 212 210 18 90
✉ cefip@cefip.com.tr
🌐 www.cefip.com.tr

Ukraine

VBR Ltd.
UA - 03040 Kiev
☎ +38 (044) 259 09 89
✉ office@vbr.com.ua
🌐 www.vbr-electric.com.ua

USA

MCR Technologies Group, Inc.
US - 61081 Sterling, Illinois
☎ +1 815 622 31 81
✉ sales@weighshark.com
🌐 www.mcrtechnologiesgroup.com

UAE

German Conveyor Industries LLC
AE - Ras Al Khaimah
☎ +971 7 2689288
✉ sales@gc-ind.com
🌐 www.gc-ind.com

Germany

Bayern - Bavaria

(PLZ: 80-87, 90-97)
b. boeser e.K.
DE - 90562 Kalchreuth-Röckenhof
☎ 0911 / 51800-35
✉ info@boeser-ek.de
🌐 www.boeser-ek.de

Ost - Germany East

(PLZ: 0-1, 34, 36-39, 98-99)
Kiepe Electric GmbH
INDUSTRY
DE - 40599 Düsseldorf
☎ +49 211 74 97 -0
✉ contact@kiepe-industry.com
🌐 www.kiepe-industry.com

Nord / West - Germany North/West

(PLZ: 2, 30-33, 35, 40-53, 56-65, 67-69)
Kiepe Electric GmbH
Alfred Czech
DE - 40599 Düsseldorf
☎ +49 23 65 / 20 13 08
✉ Alfred.Czech@kiepe-group.com
🌐 www.kiepe-industry.de

Saar - Germany Saar

(PLZ: 54-55, 66)
Elektro Seiwert GmbH
DE - 66557 Illingen-Uchtelfangen
☎ 06825 / 408-0
✉ info@elektro-seiwert.de
🌐 www.elektro-seiwert.de

Südwest - Germany Southwest

(PLZ: 7, 88-89)
Ing. Rudolf Barger GmbH
DE - 71229 Leonberg
☎ 07152 / 9458-0
✉ info@barger-gmbh.de
🌐 www.barger-gmbh.de



Kiepe Electric GmbH - Industry
Kiepe-Platz 1, DE-40599 Düsseldorf
Tel.: +49 211 74 97 -0
Info: contact@kiepe-industry.com
Order: order@kiepe-industry.com
Web: www.kiepe-industry.com